

Universal Multiple-Octet Coded Character Set
International Organization for Standardization
Organisation Internationale de Normalisation
Международная организация по стандартизации

Doc Type: Working Group Document

Title: Proposal for encoding the Bassa Vah script in the SMP of the UCS
Source: UC Berkeley Script Encoding Initiative (Universal Scripts Project)
Authors: Michael Everson and Charles Riley
Status: Liaison Contribution
Action: For consideration by JTC1/SC2/WG2 and UTC
Date: 2010-05-08

1. Introduction. The Vah script of the Bassa owes most of its development and current form to Thomas Flo Lewis, who worked with the typesetting of it beginning as early as 1907, producing various texts in the script through at least the 1930's. Dr Lewis, a Bassa from Liberia, studied in Syracuse for several years. There are traditions that trace the script's origin through contact between Lewis and Jenni Dirah, son of a slave who may have drawn on an older code of pictograms that was in use among the Bassa, for which there is little supporting documentary evidence. The Vah script and any of its possible antecedents are independent from another effort to develop an alphabet for the Bassa language that dates to the 1830's in the work of the missionary William Crocker.

Dr Lewis actively published while in Syracuse, and later in Dresden between 1915 and 1920. There is evidence of texts being produced in both places, although it is not known whether any of the texts from this period (1907-ca.1935) still exist. He returned for some time to Liberia in the 1910's and 1920's, and according to Dalby's record of an account of Abba G. Karnga, taught many students, including Barni Cheevahn, Jacob B. Logan, a Senator Morgan, and Representative Thomas H. Greeves. Graham Greene, on his travel through Liberia as recounted in his *Journey Without Maps*, reported having collected a fragment of a text in Bassa Vah script.

Since 1959, the script has been promoted through the Bassa Vah Association and United Bassa Organizations in the Americas (UNIBOA), and by individuals including Karnga, Dr Joseph M. N. Gbadyu, Dr Syrulwa Somah, and Varnie N'jola Karmo, among others.

2. Structure. Bassa Vah is a simple alphabetic script, written from left to right. Originally monocalameral, a lower-case based on handwriting was introduced in the 1990s. The lower-case was based on handwritten forms, just as Latin capital letters derive from monumental forms while Latin small letters derive from miniscule. Figure 1 shows the casing pairs. Figure 4 shows a text in monumental style; this is an older text prepared before the lower-case was introduced.

Vowels in Bassa Vah are written as letters with obligatory diacritical marks which indicate the tone of the vowel. These marks are positioned on the interior of the largest partially or wholly enclosed space of each vowel glyph; the diacritic should be toward the center without touching the edges. Because the tone is obligatory (a Bassa word is misspelled without it) the un-marked vowels are never used alone, except in discussions of the alphabet itself.

In the preliminary proposal, it was suggested to encode the vowel letters in precomposition with the tone marks, alongside the atomic parts should they be required for didactic discussion. In the Unicode character properties list the canonical decompositions were given. Discussion with UTC experts suggested that this means for encoding was not economical: either the script should be fully decomposed, requiring OpenType or similar tables within the fonts to guarantee correct rendering, or all characters should be encoded atomically, with no decompositions at all.

In order to ensure accurate rendering, the second of these options has been chosen. The Bassa Vah vowel with their tones are analogous to Łł and Øø, and to the many IPA characters with fused middle tilde. Bassa Vah is a simple script, and should have simple fonts. In the encoding, the tone marks are spacing characters (like ASCII ´ ` ~ ¨), which can be used in isolation in didactic materials, but which do not combine with any base letter. Thus the string ᵐᵉ ʒᵉᵉ-ᵉᵉᵐᵉ ᵐᵉ ᵉᵉ ᵐᵉ ᵉᵉᵉᵉ ᵐᵉ is not equivalent to the string ᵐᵉ· ʒᵉᵉ·ᵉᵉᵉᵉ·ᵐᵉ· ᵐᵉ· ᵉᵉ· ᵐᵉ·ᵉᵉ·ᵉᵉ·ᵉᵉ· ᵐᵉ· ᵉᵉ· ᵐᵉ·ᵉᵉ·ᵉᵉ·ᵉᵉ· ᵐᵉ·.

Keyboard input developed in the 1990s makes use of the atomic tone marks in dead-key sequences, so, depending on the style of deadkey implementation, ´ + ᵉ = ᵉ´ or ᵉ + ´ = ᵉ´. Either style is easy to implement on the Mac OS, or with Keyman or Windows keyboard layout software.

Dalby’s chart shows a number of glyph variants. It is likely that these should be treated as Vai and Bamum glyph variants have been: that if they are required, either a dedicated font for them should be used, or OpenType tables to invoke alternate forms. The forms used in the chart are the primary ones given in Dalby. In some cases (such as that of letter vU) modern practice has altered the glyphs somewhat from those which are given in Dalby.

3. Collating order. Collation order is as in the code chart, though the tone-marked letters sort at the second level under the unadorned letter. The order of the consonants is well-established: n, k, s, f, mb, ñ, g, d, kp, j, xw, w, z, gb, ndf, c, hw, t, b, v, h, p, l. Dalby’s charts use the order i, a, u, e, ε, ɔ, o—but the order a, ɔ, o, u, e, ε, i, found elsewhere, has been used here. The sequence is given below. Letters are separated at the first level by <, tone distinctions are separated at the second level by <<, and case distinctions are separated at the third level by <<<.

ʒ<<<ʒ< ᵐ<<<ᵐ< ᵐ<<<ᵐ< ᵐ<<<ᵐ< ᵐ<<<ᵐ< ᵐ<<<ᵐ< ᵐ<<<ᵐ< ᵐ<<<ᵐ< ᵐ<<<ᵐ< ᵐ<<<ᵐ<
ᵐ<<<ᵐ< ᵐ<<<ᵐ< ᵐ<<<ᵐ< ᵐ<<<ᵐ< ᵐ<<<ᵐ< ᵐ<<<ᵐ< ᵐ<<<ᵐ< ᵐ<<<ᵐ< ᵐ<<<ᵐ< ᵐ<<<ᵐ<
ᵐ<<<ᵐ< ᵐ<<<ᵐ< ᵐ<<<ᵐ< ᵐ<<<ᵐ< ᵐ<<<ᵐ< ᵐ<<<ᵐ< ᵐ<<<ᵐ< ᵐ<<<ᵐ< ᵐ<<<ᵐ< ᵐ<<<ᵐ<
ᵐ<<<ᵐ< ᵐ<<<ᵐ< ᵐ<<<ᵐ< ᵐ<<<ᵐ< ᵐ<<<ᵐ< ᵐ<<<ᵐ< ᵐ<<<ᵐ< ᵐ<<<ᵐ< ᵐ<<<ᵐ< ᵐ<<<ᵐ<
ᵐ<<<ᵐ< ᵐ<<<ᵐ< ᵐ<<<ᵐ< ᵐ<<<ᵐ< ᵐ<<<ᵐ< ᵐ<<<ᵐ< ᵐ<<<ᵐ< ᵐ<<<ᵐ< ᵐ<<<ᵐ< ᵐ<<<ᵐ<
ᵐ<<<ᵐ< ᵐ<<<ᵐ< ᵐ<<<ᵐ< ᵐ<<<ᵐ< ᵐ<<<ᵐ< ᵐ<<<ᵐ< ᵐ<<<ᵐ< ᵐ<<<ᵐ< ᵐ<<<ᵐ< ᵐ<<<ᵐ<
ᵐ<<<ᵐ< ᵐ<<<ᵐ< ᵐ<<<ᵐ< ᵐ<<<ᵐ< ᵐ<<<ᵐ< ᵐ<<<ᵐ< ᵐ<<<ᵐ< ᵐ<<<ᵐ< ᵐ<<<ᵐ< ᵐ<<<ᵐ<
ᵐ<<<ᵐ< ᵐ<<<ᵐ< ᵐ<<<ᵐ< ᵐ<<<ᵐ< ᵐ<<<ᵐ< ᵐ<<<ᵐ< ᵐ<<<ᵐ< ᵐ<<<ᵐ< ᵐ<<<ᵐ< ᵐ<<<ᵐ<

4. Character names. The usual UCS conventions are used, with ee representing e, E representing ε, oo representing o, and o representing ɔ. More consultation with Bassa speakers and elders will be needed to verify the phonetics and finalize decisions on the names as represented in the repertoire. The current names are based on the following: enni, ká, se, fá, mbe, yie, gah, dii, kpah, jó, xwah, wa, zó, gbù, dɔ, cè, uwu, tǒ, ba, vù, yèin, pa, wadda.

5. Linebreaking. Letters behave as in Vai and Bamum.

6. Punctuation and digits. The European FULL STOP and COMMA may be used, as are European quotation marks, A Bassa Vah COMMA and FULL STOP are both found in fonts; they have been named COMMA and FULL STOP based on their encodings in Latin-1 hack fonts. The European punctuation and Bassa Vah punctuation were used more or less interchangeably by Joseph Gbadyu, though the latter are encoded uniquely as they are obviously not glyph variants of the generic FULL STOP and COMMA. European digits are used; there are no script-specific digits to be encoded.

7. Unicode Character Properties.

```

16A70;BASSA VAH CAPITAL LETTER ENNI;Lu;0;L;;;;;N;;;16A71;
16A71;BASSA VAH SMALL LETTER ENNI;Ll;0;L;;;;;N;;;16A70;;16A70
16A72;BASSA VAH CAPITAL LETTER KA;Lu;0;L;;;;;N;;;16A73;
16A73;BASSA VAH SMALL LETTER KA;Ll;0;L;;;;;N;;;16A72;;16A72
16A74;BASSA VAH CAPITAL LETTER SE;Lu;0;L;;;;;N;;;16A74;
16A75;BASSA VAH SMALL LETTER SE;Ll;0;L;;;;;N;;;16A74;;16A74
16A76;BASSA VAH CAPITAL LETTER FA;Lu;0;L;;;;;N;;;16A77;
16A77;BASSA VAH SMALL LETTER FA;Ll;0;L;;;;;N;;;16A76;;16A76
16A78;BASSA VAH CAPITAL LETTER MBE;Lu;0;L;;;;;N;;;16A79;
16A79;BASSA VAH SMALL LETTER MBE;Ll;0;L;;;;;N;;;16A78;;16A78
16A7A;BASSA VAH CAPITAL LETTER YIE;Lu;0;L;;;;;N;;;16A7B;
16A7B;BASSA VAH SMALL LETTER YIE;Ll;0;L;;;;;N;;;16A7A;;16A7A
16A7C;BASSA VAH CAPITAL LETTER GAH;Lu;0;L;;;;;N;;;16A7D;
16A7D;BASSA VAH SMALL LETTER GAH;Ll;0;L;;;;;N;;;16A7C;;16A7C
16A7E;BASSA VAH CAPITAL LETTER DHII;Lu;0;L;;;;;N;;;16A7F;
16A7F;BASSA VAH SMALL LETTER DHII;Ll;0;L;;;;;N;;;16A7E;;16A7E
16A80;BASSA VAH CAPITAL LETTER KPAH;Lu;0;L;;;;;N;;;16A81;
16A81;BASSA VAH SMALL LETTER KPAH;Ll;0;L;;;;;N;;;16A80;;16A80
16A82;BASSA VAH CAPITAL LETTER JO;Lu;0;L;;;;;N;;;16A83;
16A83;BASSA VAH SMALL LETTER JO;Ll;0;L;;;;;N;;;16A82;;16A82
16A84;BASSA VAH CAPITAL LETTER HWAH;Lu;0;L;;;;;N;;;16A85;
16A85;BASSA VAH SMALL LETTER HWAH;Ll;0;L;;;;;N;;;16A84;;16A84
16A86;BASSA VAH CAPITAL LETTER WA;Lu;0;L;;;;;N;;;16A87;
16A87;BASSA VAH SMALL LETTER WA;Ll;0;L;;;;;N;;;16A86;;16A86
16A88;BASSA VAH CAPITAL LETTER ZO;Lu;0;L;;;;;N;;;16A89;
16A89;BASSA VAH SMALL LETTER ZO;Ll;0;L;;;;;N;;;16A88;;16A88
16A8A;BASSA VAH CAPITAL LETTER GBU;Lu;0;L;;;;;N;;;16A8B;
16A8B;BASSA VAH SMALL LETTER GBU;Ll;0;L;;;;;N;;;16A8A;;16A8A
16A8C;BASSA VAH CAPITAL LETTER DO;Lu;0;L;;;;;N;;;16A8D;
16A8D;BASSA VAH SMALL LETTER DO;Ll;0;L;;;;;N;;;16A8C;;16A8C
16A8E;BASSA VAH CAPITAL LETTER CE;Lu;0;L;;;;;N;;;16A8F;
16A8F;BASSA VAH SMALL LETTER CE;Ll;0;L;;;;;N;;;16A8E;;16A8E
16A90;BASSA VAH CAPITAL LETTER UWU;Lu;0;L;;;;;N;;;16A91;
16A91;BASSA VAH SMALL LETTER UWU;Ll;0;L;;;;;N;;;16A90;;16A90
16A92;BASSA VAH CAPITAL LETTER TO;Lu;0;L;;;;;N;;;16A93;
16A93;BASSA VAH SMALL LETTER TO;Ll;0;L;;;;;N;;;16A92;;16A92
16A94;BASSA VAH CAPITAL LETTER BA;Lu;0;L;;;;;N;;;16A95;
16A95;BASSA VAH SMALL LETTER BA;Ll;0;L;;;;;N;;;16A94;;16A94
16A96;BASSA VAH CAPITAL LETTER VU;Lu;0;L;;;;;N;;;16A97;
16A97;BASSA VAH SMALL LETTER VU;Ll;0;L;;;;;N;;;16A96;;16A96
16A98;BASSA VAH CAPITAL LETTER YEIN;Lu;0;L;;;;;N;;;16A99;
16A99;BASSA VAH SMALL LETTER YEIN;Ll;0;L;;;;;N;;;16A98;;16A98
16A9A;BASSA VAH CAPITAL LETTER PA;Lu;0;L;;;;;N;;;16A9B;
16A9B;BASSA VAH SMALL LETTER PA;Ll;0;L;;;;;N;;;16A9A;;16A9A
16A9C;BASSA VAH CAPITAL LETTER WADDA;Lu;0;L;;;;;N;;;16A9D;
16A9D;BASSA VAH SMALL LETTER WADDA;Ll;0;L;;;;;N;;;16A9C;;16A9C
16A9E;BASSA VAH CAPITAL LETTER A;Lu;0;L;;;;;N;;;16A9F;
16A9F;BASSA VAH SMALL LETTER A;Ll;0;L;;;;;N;;;16A9E;;16A9E
16AA0;BASSA VAH CAPITAL LETTER A HIGH TONE;Lu;0;L;;;;;N;;;16AA1;
16AA1;BASSA VAH SMALL LETTER A HIGH TONE;Ll;0;L;;;;;N;;;16AA0;;16AA0
16AA2;BASSA VAH CAPITAL LETTER A GRAVE TONE;Lu;0;L;;;;;N;;;16AA3;
16AA3;BASSA VAH SMALL LETTER A GRAVE TONE;Ll;0;L;;;;;N;;;16AA2;;16AA2
16AA4;BASSA VAH CAPITAL LETTER A MID-LOW TONE;Lu;0;L;;;;;N;;;16AA5;
16AA5;BASSA VAH SMALL LETTER A MID-LOW TONE;Ll;0;L;;;;;N;;;16AA4;;16AA4
16AA6;BASSA VAH CAPITAL LETTER A DRAG TONE;Lu;0;L;;;;;N;;;16AA7;
16AA7;BASSA VAH SMALL LETTER A DRAG TONE;Ll;0;L;;;;;N;;;16AA6;;16AA6
16AA8;BASSA VAH CAPITAL LETTER A DOUBLE TONE;Lu;0;L;;;;;N;;;16AA9;
16AA9;BASSA VAH SMALL LETTER A DOUBLE TONE;Ll;0;L;;;;;N;;;16AA8;;16AA8
16AAA;BASSA VAH CAPITAL LETTER O;Lu;0;L;;;;;N;;;16AAB;
16AAB;BASSA VAH SMALL LETTER O;Ll;0;L;;;;;N;;;16AAA;;16AAA
16AAC;BASSA VAH CAPITAL LETTER O HIGH TONE;Lu;0;L;;;;;N;;;16AAD;
16AAD;BASSA VAH SMALL LETTER O HIGH TONE;Ll;0;L;;;;;N;;;16AAC;;16AAC
16AAE;BASSA VAH CAPITAL LETTER O GRAVE TONE;Lu;0;L;;;;;N;;;16AAF;
16AAF;BASSA VAH SMALL LETTER O GRAVE TONE;Ll;0;L;;;;;N;;;16AAE;;16AAE
16AB0;BASSA VAH CAPITAL LETTER O MID-LOW TONE;Lu;0;L;;;;;N;;;16AB1;
16AB1;BASSA VAH SMALL LETTER O MID-LOW TONE;Ll;0;L;;;;;N;;;16AB0;;16AB0
16AB2;BASSA VAH CAPITAL LETTER O DRAG TONE;Lu;0;L;;;;;N;;;16AB3;
16AB3;BASSA VAH SMALL LETTER O DRAG TONE;Ll;0;L;;;;;N;;;16AB2;;16AB2
16AB4;BASSA VAH CAPITAL LETTER O DOUBLE TONE;Lu;0;L;;;;;N;;;16AB5;
16AB5;BASSA VAH SMALL LETTER O DOUBLE TONE;Ll;0;L;;;;;N;;;16AB4;;16AB4
16AB6;BASSA VAH CAPITAL LETTER OO;Lu;0;L;;;;;N;;;16AB7;

```

16AB7;BASSA VAH SMALL LETTER OO;Ll;0;L; ; ; ; ;N; ; ; ;16AB6; ;16AB6
16AB8;BASSA VAH CAPITAL LETTER OO HIGH TONE;Lu;0;L; ; ; ; ;N; ; ; ;16AB9;
16AB9;BASSA VAH SMALL LETTER OO HIGH TONE;Ll;0;L; ; ; ; ;N; ; ; ;16AB8; ;16AB8
16ABA;BASSA VAH CAPITAL LETTER OO GRAVE TONE;Lu;0;L; ; ; ; ;N; ; ; ;16ABB;
16ABB;BASSA VAH SMALL LETTER OO GRAVE TONE;Ll;0;L; ; ; ; ;N; ; ; ;16ABA; ;16ABA
16ABC;BASSA VAH CAPITAL LETTER OO MID-LOW TONE;Lu;0;L; ; ; ; ;N; ; ; ;16ABD;
16ABD;BASSA VAH SMALL LETTER OO MID-LOW TONE;Ll;0;L; ; ; ; ;N; ; ; ;16ABC; ;16ABC
16ABE;BASSA VAH CAPITAL LETTER OO DRAG TONE;Lu;0;L; ; ; ; ;N; ; ; ;16ABF;
16ABF;BASSA VAH SMALL LETTER OO DRAG TONE;Ll;0;L; ; ; ; ;N; ; ; ;16ABE; ;16ABE
16AC0;BASSA VAH CAPITAL LETTER OO DOUBLE TONE;Lu;0;L; ; ; ; ;N; ; ; ;16AC1;
16AC1;BASSA VAH SMALL LETTER OO DOUBLE TONE;Ll;0;L; ; ; ; ;N; ; ; ;16AC0; ;16AC0
16AC2;BASSA VAH CAPITAL LETTER U;Lu;0;L; ; ; ; ;N; ; ; ;16AC3;
16AC3;BASSA VAH SMALL LETTER U;Ll;0;L; ; ; ; ;N; ; ; ;16AC2; ;16AC2
16AC4;BASSA VAH CAPITAL LETTER U HIGH TONE;Lu;0;L; ; ; ; ;N; ; ; ;16AC5;
16AC5;BASSA VAH SMALL LETTER U HIGH TONE;Ll;0;L; ; ; ; ;N; ; ; ;16AC4; ;16AC4
16AC6;BASSA VAH CAPITAL LETTER U GRAVE TONE;Lu;0;L; ; ; ; ;N; ; ; ;16AC7;
16AC7;BASSA VAH SMALL LETTER U GRAVE TONE;Ll;0;L; ; ; ; ;N; ; ; ;16AC6; ;16AC6
16AC8;BASSA VAH CAPITAL LETTER U MID-LOW TONE;Lu;0;L; ; ; ; ;N; ; ; ;16AC9;
16AC9;BASSA VAH SMALL LETTER U MID-LOW TONE;Ll;0;L; ; ; ; ;N; ; ; ;16AC8; ;16AC8
16ACA;BASSA VAH CAPITAL LETTER U DRAG TONE;Lu;0;L; ; ; ; ;N; ; ; ;16ACB;
16ACB;BASSA VAH SMALL LETTER U DRAG TONE;Ll;0;L; ; ; ; ;N; ; ; ;16ACA; ;16ACA
16ACC;BASSA VAH CAPITAL LETTER U DOUBLE TONE;Lu;0;L; ; ; ; ;N; ; ; ;16ACD;
16ACD;BASSA VAH SMALL LETTER U DOUBLE TONE;Ll;0;L; ; ; ; ;N; ; ; ;16ACC; ;16ACC
16ACE;BASSA VAH CAPITAL LETTER EE;Lu;0;L; ; ; ; ;N; ; ; ;16ACF;
16ACF;BASSA VAH SMALL LETTER EE;Ll;0;L; ; ; ; ;N; ; ; ;16ACE; ;16ACE
16AD0;BASSA VAH CAPITAL LETTER EE HIGH TONE;Lu;0;L; ; ; ; ;N; ; ; ;16AD1;
16AD1;BASSA VAH SMALL LETTER EE HIGH TONE;Ll;0;L; ; ; ; ;N; ; ; ;16AD0; ;16AD0
16AD2;BASSA VAH CAPITAL LETTER EE GRAVE TONE;Lu;0;L; ; ; ; ;N; ; ; ;16AD3;
16AD3;BASSA VAH SMALL LETTER EE GRAVE TONE;Ll;0;L; ; ; ; ;N; ; ; ;16AD2; ;16AD2
16AD4;BASSA VAH CAPITAL LETTER EE MID-LOW TONE;Lu;0;L; ; ; ; ;N; ; ; ;16AD5;
16AD5;BASSA VAH SMALL LETTER EE MID-LOW TONE;Ll;0;L; ; ; ; ;N; ; ; ;16AD4; ;16AD4
16AD6;BASSA VAH CAPITAL LETTER EE DRAG TONE;Lu;0;L; ; ; ; ;N; ; ; ;16AD7;
16AD7;BASSA VAH SMALL LETTER EE DRAG TONE;Ll;0;L; ; ; ; ;N; ; ; ;16AD6; ;16AD6
16AD8;BASSA VAH CAPITAL LETTER EE DOUBLE TONE;Lu;0;L; ; ; ; ;N; ; ; ;16AD9;
16AD9;BASSA VAH SMALL LETTER EE DOUBLE TONE;Ll;0;L; ; ; ; ;N; ; ; ;16AD8; ;16AD8
16ADA;BASSA VAH CAPITAL LETTER E;Lu;0;L; ; ; ; ;N; ; ; ;16ADB;
16ADB;BASSA VAH SMALL LETTER E;Ll;0;L; ; ; ; ;N; ; ; ;16ADA; ;16ADA
16ADC;BASSA VAH CAPITAL LETTER E HIGH TONE;Lu;0;L; ; ; ; ;N; ; ; ;16ADD;
16ADD;BASSA VAH SMALL LETTER E HIGH TONE;Ll;0;L; ; ; ; ;N; ; ; ;16ADC; ;16ADC
16ADE;BASSA VAH CAPITAL LETTER E GRAVE TONE;Lu;0;L; ; ; ; ;N; ; ; ;16ADF;
16ADF;BASSA VAH SMALL LETTER E GRAVE TONE;Ll;0;L; ; ; ; ;N; ; ; ;16ADE; ;16ADE
16AE0;BASSA VAH CAPITAL LETTER E MID-LOW TONE;Lu;0;L; ; ; ; ;N; ; ; ;16AE1;
16AE1;BASSA VAH SMALL LETTER E MID-LOW TONE;Ll;0;L; ; ; ; ;N; ; ; ;16AE0; ;16AE0
16AE2;BASSA VAH CAPITAL LETTER E DRAG TONE;Lu;0;L; ; ; ; ;N; ; ; ;16AE3;
16AE3;BASSA VAH SMALL LETTER E DRAG TONE;Ll;0;L; ; ; ; ;N; ; ; ;16AE2; ;16AE2
16AE4;BASSA VAH CAPITAL LETTER E DOUBLE TONE;Lu;0;L; ; ; ; ;N; ; ; ;16AE5;
16AE5;BASSA VAH SMALL LETTER E DOUBLE TONE;Ll;0;L; ; ; ; ;N; ; ; ;16AE4; ;16AE4
16AE6;BASSA VAH CAPITAL LETTER I;Lu;0;L; ; ; ; ;N; ; ; ;16AE7;
16AE7;BASSA VAH SMALL LETTER I;Ll;0;L; ; ; ; ;N; ; ; ;16AE6; ;16AE6
16AE8;BASSA VAH CAPITAL LETTER I HIGH TONE;Lu;0;L; ; ; ; ;N; ; ; ;16AE9;
16AE9;BASSA VAH SMALL LETTER I HIGH TONE;Ll;0;L; ; ; ; ;N; ; ; ;16AE8; ;16AE8
16AEA;BASSA VAH CAPITAL LETTER I GRAVE TONE;Lu;0;L; ; ; ; ;N; ; ; ;16AEB;
16AEB;BASSA VAH SMALL LETTER I GRAVE TONE;Ll;0;L; ; ; ; ;N; ; ; ;16AEA; ;16AEA
16AEC;BASSA VAH CAPITAL LETTER I MID-LOW TONE;Lu;0;L; ; ; ; ;N; ; ; ;16AED;
16AED;BASSA VAH SMALL LETTER I MID-LOW TONE;Ll;0;L; ; ; ; ;N; ; ; ;16AEC; ;16AEC
16AEE;BASSA VAH CAPITAL LETTER I DRAG TONE;Lu;0;L; ; ; ; ;N; ; ; ;16AEF;
16AEF;BASSA VAH SMALL LETTER I DRAG TONE;Ll;0;L; ; ; ; ;N; ; ; ;16AEE; ;16AEE
16AF0;BASSA VAH CAPITAL LETTER I DOUBLE TONE;Lu;0;L; ; ; ; ;N; ; ; ;16AF1;
16AF1;BASSA VAH SMALL LETTER I DOUBLE TONE;Ll;0;L; ; ; ; ;N; ; ; ;16AF0; ;16AF0
16AF2;BASSA VAH HIGH TONE MARK;Lm;0;L; ; ; ; ;N; ; ; ; ;
16AF3;BASSA VAH GRAVE TONE MARK;Lm;0;L; ; ; ; ;N; ; ; ; ;
16AF4;BASSA VAH MID-LOW TONE MARK;Lm;0;L; ; ; ; ;N; ; ; ; ;
16AF5;BASSA VAH DOUBLE TONE MARK;Lm;0;L; ; ; ; ;N; ; ; ; ;
16AF6;BASSA VAH DRAG TONE MARK;Lm;0;L; ; ; ; ;N; ; ; ; ;
16AF7;BASSA VAH COMMA;Po;0;L; ; ; ; ;N; ; ; ; ;
16AF8;BASSA VAH FULL STOP;Po;0;L; ; ; ; ;N; ; ; ; ;

8. Acknowledgements. This project was made possible in part by a grant from the U.S. National Endowment for the Humanities, which funded the Universal Scripts Project (part of the Script Encoding Initiative at UC Berkeley) in respect of the Bassa Vah encoding. Any views, findings, conclusions or recommendations expressed in this publication do not necessarily reflect those of the National Endowment of the Humanities.

9. Bibliography

- Baumann, Thurnwald, and Diedrich Westermann. 1940. *Völkerkunde von Afrika*. Essen: [s.n].
- Dalby, David. 1967. "A survey of the indigenous scripts of Liberia and Sierra Leone: Vai, Bassa Vah, Bassa Vah, Kpelle and Bassa" in *African Language Studies* 8. 1-51.
- Greene, Graham. 1936. *Journey without maps*. London: Heinemann.

- Hobley, J. 1964. "A preliminary tonal analysis of the Bassa language", *Journal of West African Languages*.
- Karmo, Varnie N'jola. Personal communication, December 2008.
- Karnga, Abba G. 1995. *Bassa orthography of the Bassa tribe of Liberia = Bassa banan wudu mohn Bassa nyohn nin Liberia keh je*. [s.l.]: [s.n.].
- Liberia Ministry of Education. 1975. *À zà basóò céédè Wuquùn*. Monrovia: Liberia Ministry of Education, Bureau of Planning and Research.
- Pichl, W. J. 1966. "L'écriture bassa au Libéria", in *Bulletin de l'IFAN*, XXVIII, série B.
- Slager, Tim. 2008. "A brief summary of Liberian indigenous scripts". Paper presented at 2008 Liberian Studies Association Conference in Toledo, Ohio; text hosted at <http://cefliberia.org/extras/IndigenousScripts.pdf>.
- Tuchscherer, Konrad. [n.d. "Baptist heritage around the world : The Baptist and the Bassa syllabary: William Crocker's Liberia experiment in the 1830s", in *American Baptist Quarterly*, Volume 22, fascicule no. 2, pp. 212-220.
- United Bassa Organizations in the Americas www.uniboa.org/bassalanguage.html, accessed 3/20/2009

	16A7	16A8	16A9	16AA	16AB	16AC	16AD	16AE	16AF
0	𐞮 16A70	𐞯 16A80	𐞰 16A90	𐞱 16AA0	𐞲 16AB0	𐞳 16AC0	𐞴 16AD0	𐞵 16AE0	𐞶 16AF0
1	𐞷 16A71	𐞸 16A81	𐞹 16A91	𐞺 16AA1	𐞻 16AB1	𐞼 16AC1	𐞽 16AD1	𐞾 16AE1	𐞿 16AF1
2	𐟀 16A72	𐟁 16A82	𐟂 16A92	𐟃 16AA2	𐟄 16AB2	𐟅 16AC2	𐟆 16AD2	𐟇 16AE2	· 16AF2
3	𐟈 16A73	𐟉 16A83	𐟊 16A93	𐟋 16AA3	𐟌 16AB3	𐟍 16AC3	𐟎 16AD3	𐟏 16AE3	ᳵ 16AF3
4	𐟐 16A74	𐟑 16A84	𐟒 16A94	𐟓 16AA4	𐟔 16AB4	𐟕 16AC4	𐟖 16AD4	𐟗 16AE4	ᳶ 16AF4
5	𐟘 16A75	𐟙 16A85	𐟚 16A95	𐟛 16AA5	𐟜 16AB5	𐟝 16AC5	𐟞 16AD5	𐟟 16AE5	᳷ 16AF5
6	𐟠 16A76	𐟡 16A86	𐟢 16A96	𐟣 16AA6	𐟤 16AB6	𐟥 16AC6	𐟦 16AD6	𐟧 16AE6	᳸ 16AF6
7	𐟨 16A77	𐟩 16A87	𐟪 16A97	𐟫 16AA7	𐟬 16AB7	𐟭 16AC7	𐟮 16AD7	𐟯 16AE7	᳹ 16AF7
8	𐟰 16A78	𐟱 16A88	𐟲 16A98	𐟳 16AA8	𐟴 16AB8	𐟵 16AC8	𐟶 16AD8	𐟷 16AE8	ᳺ 16AF8
9	𐟸 16A79	𐟹 16A89	𐟺 16A99	𐟻 16AA9	𐟼 16AB9	𐟽 16AC9	𐟾 16AD9	𐟿 16AE9	
A	𐟿 16A7A	𐠀 16A8A	𐠁 16A9A	𐠂 16AAA	𐠃 16ABA	𐠄 16ACA	𐠅 16ADA	𐠆 16AEA	
B	𐠇 16A7B	𐠈 16A8B	𐠉 16A9B	𐠊 16AAB	𐠋 16ABB	𐠌 16ACB	𐠍 16ADB	𐠎 16AEB	
C	𐠏 16A7C	𐠐 16A8C	𐠑 16A9C	𐠒 16AAC	𐠓 16ABC	𐠔 16ACC	𐠕 16ADC	𐠖 16AEC	
D	𐠗 16A7D	𐠘 16A8D	𐠙 16A9D	𐠚 16AAD	𐠛 16ABD	𐠜 16ACD	𐠝 16ADD	𐠞 16AED	
E	𐠟 16A7E	𐠠 16A8E	𐠡 16A9E	𐠢 16AAE	𐠣 16ABE	𐠤 16ACE	𐠥 16ADE	𐠦 16AEE	
F	𐠧 16A7F	𐠨 16A8F	𐠩 16A9F	𐠪 16AAF	𐠫 16ABF	𐠬 16ACF	𐠭 16ADF	𐠮 16AEF	

Consonant letters

16A70	𐞀	BASSA VAH CAPITAL LETTER ENNI
16A71	𐞁	BASSA VAH SMALL LETTER ENNI
16A72	𐞂	BASSA VAH CAPITAL LETTER KA
16A73	𐞃	BASSA VAH SMALL LETTER KA
16A74	𐞄	BASSA VAH CAPITAL LETTER SE
16A75	𐞅	BASSA VAH SMALL LETTER SE
16A76	𐞆	BASSA VAH CAPITAL LETTER FA
16A77	𐞇	BASSA VAH SMALL LETTER FA
16A78	𐞈	BASSA VAH CAPITAL LETTER MBE
16A79	𐞉	BASSA VAH SMALL LETTER MBE
16A7A	𐞊	BASSA VAH CAPITAL LETTER YIE
16A7B	𐞋	BASSA VAH SMALL LETTER YIE
16A7C	𐞌	BASSA VAH CAPITAL LETTER GAH
16A7D	𐞍	BASSA VAH SMALL LETTER GAH
16A7E	𐞎	BASSA VAH CAPITAL LETTER DHII
16A7F	𐞏	BASSA VAH SMALL LETTER DHII
16A80	𐞐	BASSA VAH CAPITAL LETTER KPAH
16A81	𐞑	BASSA VAH SMALL LETTER KPAH
16A82	𐞒	BASSA VAH CAPITAL LETTER JO
16A83	𐞓	BASSA VAH SMALL LETTER JO
16A84	𐞔	BASSA VAH CAPITAL LETTER HWAH
16A85	𐞕	BASSA VAH SMALL LETTER HWAH
16A86	𐞖	BASSA VAH CAPITAL LETTER WA
16A87	𐞗	BASSA VAH SMALL LETTER WA
16A88	𐞘	BASSA VAH CAPITAL LETTER ZO
16A89	𐞙	BASSA VAH SMALL LETTER ZO
16A8A	𐞚	BASSA VAH CAPITAL LETTER GBU
16A8B	𐞛	BASSA VAH SMALL LETTER GBU
16A8C	𐞜	BASSA VAH CAPITAL LETTER DO
16A8D	𐞝	BASSA VAH SMALL LETTER DO
16A8E	𐞞	BASSA VAH CAPITAL LETTER CE
16A8F	𐞟	BASSA VAH SMALL LETTER CE
16A90	𐞠	BASSA VAH CAPITAL LETTER UWU
16A91	𐞡	BASSA VAH SMALL LETTER UWU
16A92	𐞢	BASSA VAH CAPITAL LETTER TO
16A93	𐞣	BASSA VAH SMALL LETTER TO
16A94	𐞤	BASSA VAH CAPITAL LETTER BA
16A95	𐞥	BASSA VAH SMALL LETTER BA
16A96	𐞦	BASSA VAH CAPITAL LETTER VU
16A97	𐞧	BASSA VAH SMALL LETTER VU
16A98	𐞨	BASSA VAH CAPITAL LETTER YEIN
16A99	𐞩	BASSA VAH SMALL LETTER YEIN
16A9A	𐞪	BASSA VAH CAPITAL LETTER PA
16A9B	𐞫	BASSA VAH SMALL LETTER PA
16A9C	𐞬	BASSA VAH CAPITAL LETTER WADDA
16A9D	𐞭	BASSA VAH SMALL LETTER WADDA

Vowel letters

16A9E	𐞮	BASSA VAH CAPITAL LETTER A
16A9F	𐞯	BASSA VAH SMALL LETTER A
16AA0	𐞰	BASSA VAH CAPITAL LETTER A HIGH TONE
16AA1	𐞱	BASSA VAH SMALL LETTER A HIGH TONE
16AA2	𐞲	BASSA VAH CAPITAL LETTER A GRAVE TONE
16AA3	𐞳	BASSA VAH SMALL LETTER A GRAVE TONE
16AA4	𐞴	BASSA VAH CAPITAL LETTER A MID-LOW TONE
16AA5	𐞵	BASSA VAH SMALL LETTER A MID-LOW TONE
16AA6	𐞶	BASSA VAH CAPITAL LETTER A DRAG TONE
16AA7	𐞷	BASSA VAH SMALL LETTER A DRAG TONE
16AA8	𐞸	BASSA VAH CAPITAL LETTER A DOUBLE TONE
16AA9	𐞹	BASSA VAH SMALL LETTER A DOUBLE TONE
16AAA	𐞺	BASSA VAH CAPITAL LETTER O
16AAB	𐞻	BASSA VAH SMALL LETTER O
16AAC	𐞼	BASSA VAH CAPITAL LETTER O HIGH TONE
16AAD	𐞽	BASSA VAH SMALL LETTER O HIGH TONE
16AAE	𐞾	BASSA VAH CAPITAL LETTER O GRAVE TONE

16AAF	𐞿	BASSA VAH SMALL LETTER O GRAVE TONE
16AB0	𐟀	BASSA VAH CAPITAL LETTER O MID-LOW TONE
16AB1	𐟁	BASSA VAH SMALL LETTER O MID-LOW TONE
16AB2	𐟂	BASSA VAH CAPITAL LETTER O DRAG TONE
16AB3	𐟃	BASSA VAH SMALL LETTER O DRAG TONE
16AB4	𐟄	BASSA VAH CAPITAL LETTER O DOUBLE TONE
16AB5	𐟅	BASSA VAH SMALL LETTER O DOUBLE TONE
16AB6	𐟆	BASSA VAH CAPITAL LETTER OO
16AB7	𐟇	BASSA VAH SMALL LETTER OO
16AB8	𐟈	BASSA VAH CAPITAL LETTER OO HIGH TONE
16AB9	𐟉	BASSA VAH SMALL LETTER OO HIGH TONE
16ABA	𐟊	BASSA VAH CAPITAL LETTER OO GRAVE TONE
16ABB	𐟋	BASSA VAH SMALL LETTER OO GRAVE TONE
16ABC	𐟌	BASSA VAH CAPITAL LETTER OO MID-LOW TONE
16ABD	𐟍	BASSA VAH SMALL LETTER OO MID-LOW TONE
16ABE	𐟎	BASSA VAH CAPITAL LETTER OO DRAG TONE
16ABF	𐟏	BASSA VAH SMALL LETTER OO DRAG TONE
16AC0	𐟐	BASSA VAH CAPITAL LETTER OO DOUBLE TONE
16AC1	𐟑	BASSA VAH SMALL LETTER OO DOUBLE TONE
16AC2	𐟒	BASSA VAH CAPITAL LETTER U
16AC3	𐟓	BASSA VAH SMALL LETTER U
16AC4	𐟔	BASSA VAH CAPITAL LETTER U HIGH TONE
16AC5	𐟕	BASSA VAH SMALL LETTER U HIGH TONE
16AC6	𐟖	BASSA VAH CAPITAL LETTER U GRAVE TONE
16AC7	𐟗	BASSA VAH SMALL LETTER U GRAVE TONE
16AC8	𐟘	BASSA VAH CAPITAL LETTER U MID-LOW TONE
16AC9	𐟙	BASSA VAH SMALL LETTER U MID-LOW TONE
16ACA	𐟚	BASSA VAH CAPITAL LETTER U DRAG TONE
16ACB	𐟛	BASSA VAH SMALL LETTER U DRAG TONE
16ACC	𐟜	BASSA VAH CAPITAL LETTER U DOUBLE TONE
16ACD	𐟝	BASSA VAH SMALL LETTER U DOUBLE TONE
16ACE	𐟞	BASSA VAH CAPITAL LETTER EE
16ACF	𐟟	BASSA VAH SMALL LETTER EE
16AD0	𐟠	BASSA VAH CAPITAL LETTER EE HIGH TONE
16AD1	𐟡	BASSA VAH SMALL LETTER EE HIGH TONE
16AD2	𐟢	BASSA VAH CAPITAL LETTER EE GRAVE TONE
16AD3	𐟣	BASSA VAH SMALL LETTER EE GRAVE TONE
16AD4	𐟤	BASSA VAH CAPITAL LETTER EE MID-LOW TONE
16AD5	𐟥	BASSA VAH SMALL LETTER EE MID-LOW TONE
16AD6	𐟦	BASSA VAH CAPITAL LETTER EE DRAG TONE
16AD7	𐟧	BASSA VAH SMALL LETTER EE DRAG TONE
16AD8	𐟨	BASSA VAH CAPITAL LETTER EE DOUBLE TONE
16AD9	𐟩	BASSA VAH SMALL LETTER EE DOUBLE TONE
16ADA	𐟪	BASSA VAH CAPITAL LETTER E
16ADB	𐟫	BASSA VAH SMALL LETTER E
16ADC	𐟬	BASSA VAH CAPITAL LETTER E HIGH TONE
16ADD	𐟭	BASSA VAH SMALL LETTER E HIGH TONE
16ADE	𐟮	BASSA VAH CAPITAL LETTER E GRAVE TONE
16ADF	𐟯	BASSA VAH SMALL LETTER E GRAVE TONE
16AE0	𐟰	BASSA VAH CAPITAL LETTER E MID-LOW TONE
16AE1	𐟱	BASSA VAH SMALL LETTER E MID-LOW TONE
16AE2	𐟲	BASSA VAH CAPITAL LETTER E DRAG TONE
16AE3	𐟳	BASSA VAH SMALL LETTER E DRAG TONE
16AE4	𐟴	BASSA VAH CAPITAL LETTER E DOUBLE TONE
16AE5	𐟵	BASSA VAH SMALL LETTER E DOUBLE TONE
16AE6	𐟶	BASSA VAH CAPITAL LETTER I
16AE7	𐟷	BASSA VAH SMALL LETTER I
16AE8	𐟸	BASSA VAH CAPITAL LETTER I HIGH TONE
16AE9	𐟹	BASSA VAH SMALL LETTER I HIGH TONE
16AEA	𐟺	BASSA VAH CAPITAL LETTER I GRAVE TONE
16AEB	𐟻	BASSA VAH SMALL LETTER I GRAVE TONE

16AEC ꞑ BASSA VAH CAPITAL LETTER I MID-LOW TONE
16AED ꞑ BASSA VAH SMALL LETTER I MID-LOW TONE
16AEE ꞑ BASSA VAH CAPITAL LETTER I DRAG TONE
16AEF ꞑ BASSA VAH SMALL LETTER I DRAG TONE
16AF0 ꞑ BASSA VAH CAPITAL LETTER I DOUBLE TONE
16AF1 ꞑ BASSA VAH SMALL LETTER I DOUBLE TONE

Tone marks

16AF2 · BASSA VAH HIGH TONE MARK
16AF3 › BASSA VAH GRAVE TONE MARK
16AF4 ~ BASSA VAH MID-LOW TONE MARK
16AF5 › BASSA VAH DOUBLE TONE MARK
16AF6 † BASSA VAH DRAG TONE MARK

Punctuation

16AF7 ± BASSA VAH COMMA
16AF8 + BASSA VAH FULL STOP

9. Figures.

Bassa Vah "Vah" Alphabet							
CONSONANTS							
3 3 (n)	∩ ^ (k)	z z (s)	→ → (f)	g g (mb)	σ σ (t/μ)	s s (g)	δ δ (d)
7 7 (kp)	→ → (j)	z z (xw)	↘ ↘ (w)	o o (z)	o o (gb)	5 4 (d/μ)	z z (ch)
v v (hw)	8 8 (t)	z z (b)	l l (v)	h h (h)	7 7 (p)	l l (r)	
VOWELS							
∩ ∩ (a)	o o (o)	o o (o)	o o (u)	e e (e)	<< (r)	δ δ (i)	
TONAL MARKS		· (high)	∪ (grave)	∴ (mid-low)	∩ (double)	! (drag)	

Figure 1. Chart of Bassa Vah showing casing pairs and the vowels and tone marks in isolation. (The original scan here had the names “double” and “drag” reversed but this has been corrected.)

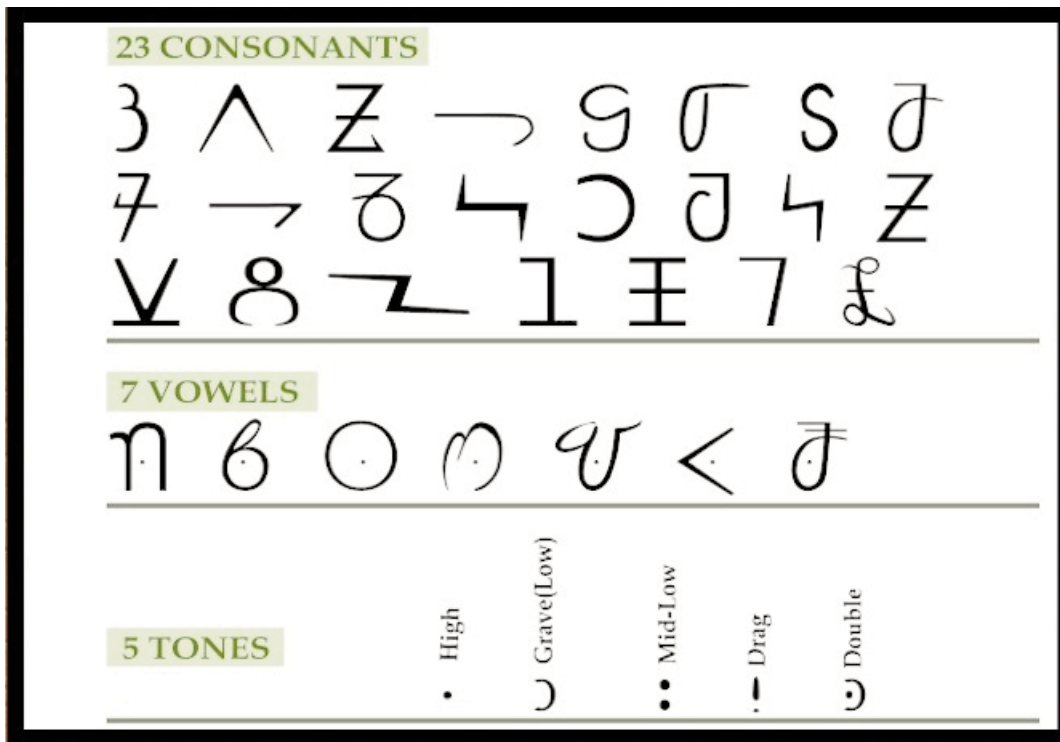


Figure 2. Sample of handwritten Bassa Vah text.

Table V The Bassa Alphabet									
CONSONANTS				VOWELS AND TONES					
LENIS		FORTIS			HIGH	MID	LOW	MID-LOW	HIGH-LOW
p	²² Ɂ(Ɂ)	b	¹⁹ Ɂ	i	Ɂ	Ɂ(Ɂ)	Ɂ	Ɂ	Ɂ
kp	⁹ Ɂ(Ɂ)	gb/gm	¹⁴ Ɂ						
m/b	⁵ Ɂ(Ɂ)			a	Ɂ(Ɂ)		etc.		
f	⁴ Ɂ(Ɂ)	v	²⁰ Ɂ(Ɂ)						
t	¹⁸ Ɂ(Ɂ)	d	⁸ Ɂ	u	Ɂ(Ɂ)		etc.		
n	¹ Ɂ								
dy/ny	⁶ Ɂ(Ɂ)			e	Ɂ(Ɂ)		etc.		
d.(l)	¹⁵ Ɂ(Ɂ)								
r	²³ Ɂ(Ɂ)			ɛ	<		etc.		
s	³ Ɂ(Ɂ)	z	¹³ Ɂ						
c	¹⁶ Ɂ	j	¹⁰ Ɂ	ɔ	Ɂ (Ɂ)		etc.		
k	² Ɂ(Ɂ)	g	⁷ Ɂ(Ɂ)						
w	¹² Ɂ(Ɂ)	h	²¹ Ɂ(H)	o	Ɂ		etc.		
xw	¹¹ Ɂ(Ɂ)	hw	¹⁷ Ɂ(Ɂ)						

Figure 3. Table of Bassa Vah syllables from Dalby 1967.

Ɂ<Ɂ ɁɁɁɁɁ ɁɁ ɁɁ ɁɁɁ ɁɁɁɁɁ
 ɁɁ ɁɁ Ɂ< ɁɁɁ ɁɁ ɁɁɁɁɁ ɁɁɁɁɁ
 Ɂ ɁɁɁɁɁ ɁɁ ɁɁ ɁɁ ɁɁ ɁɁ “ɁɁ,
 Ɂ ɁɁ Ɂ< Ɂ ɁɁ ɁɁɁɁɁɁ ɁɁ
 ɁɁɁɁɁ, ɁɁɁɁɁɁ Ɂ ɁɁ ɁɁɁ ɁɁɁ
 ɁɁɁɁ Ɂ ɁɁɁ ɁɁ< ɁɁɁɁɁ ɁɁ”
 ɁɁ ɁɁ “ɁɁ ɁɁɁɁɁ ɁɁ ɁɁ< Ɂ<
 ɁɁ ɁɁ ɁɁ ɁɁɁɁɁɁ ɁɁɁ ɁɁɁɁɁ”
 ɁɁɁɁɁ ɁɁ “ɁɁɁ, ɁɁ ɁɁ< ɁɁ
 ɁɁ ɁɁ ɁɁɁɁɁɁ ɁɁɁ ɁɁɁɁɁ”
 Ɂ< ɁɁ ɁɁ ɁɁɁɁ

Figure 4. Sample of upper-case or “monumental” (all caps) style Bassa Vah text.

This particular text was written before case was innovated for the script.

The final character is the BASSA BAH COMMA.

A. Administrative

1. Title

Proposal for encoding the Bassa Vah script in the SMP of the UCS

2. Requester's name

UC Berkeley Script Encoding Initiative (Universal Scripts Project)

3. Requester type (Member body/Liaison/Individual contribution)

Liaison contribution.

4. Submission date

2010-05-08

5. Requester's reference (if applicable)

6. Choose one of the following:

6a. This is a complete proposal

No.

6b. More information will be provided later

Yes.

B. Technical – General

1. Choose one of the following:

1a. This proposal is for a new script (set of characters)

Yes.

1b. Proposed name of script

Bassa Vah.

1c. The proposal is for addition of character(s) to an existing block

No.

1d. Name of the existing block

2. Number of characters in proposal

137.

3. Proposed category (A-Contemporary; B.1-Specialized (small collection); B.2-Specialized (large collection); C-Major extinct; D-Attested extinct; E-Minor extinct; F-Archaic Hieroglyphic or Ideographic; G-Obscure or questionable usage symbols)

Category A.

4a. Is a repertoire including character names provided?

Yes.

4b. If YES, are the names in accordance with the “character naming guidelines” in Annex L of P&P document?

Yes.

4c. Are the character shapes attached in a legible form suitable for review?

Yes.

5a. Who will provide the appropriate computerized font (ordered preference: True Type, or PostScript format) for publishing the standard?

Jason Glavy and Michael Everson.

5b. If available now, identify source(s) for the font (include address, e-mail, ftp-site, etc.) and indicate the tools used:

Michael Everson, FontLab.

6a. Are references (to other character sets, dictionaries, descriptive texts etc.) provided?

Yes.

6b. Are published examples of use (such as samples from newspapers, magazines, or other sources) of proposed characters attached?

Yes.

7. Does the proposal address other aspects of character data processing (if applicable) such as input, presentation, sorting, searching, indexing, transliteration etc. (if yes please enclose information)?

Yes.

8. Submitters are invited to provide any additional information about Properties of the proposed Character(s) or Script that will assist in correct understanding of and correct linguistic processing of the proposed character(s) or script. Examples of such properties are: Casing information, Numeric information, Currency information, Display behaviour information such as line breaks, widths etc., Combining behaviour, Spacing behaviour, Directional behaviour, Default Collation behaviour, relevance in Mark Up contexts, Compatibility equivalence and other Unicode normalization related information. See the Unicode standard at <http://www.unicode.org> for such information on other scripts. Also see Unicode Character Database <http://www.unicode.org/Public/UNIDATA/UnicodeCharacterDatabase.html> and associated Unicode Technical Reports for information needed for consideration by the Unicode Technical Committee for inclusion in the Unicode Standard.

See above.

C. Technical – Justification

1. Has this proposal for addition of character(s) been submitted before? If YES, explain.

No.

2a. Has contact been made to members of the user community (for example: National Body, user groups of the script or characters, other experts, etc.)?

No.

2b. If YES, with whom?

2c. If YES, available relevant documents

3. Information on the user community for the proposed characters (for example: size, demographics, information technology use, or publishing use) is included?

See above.

4a. The context of use for the proposed characters (type of use; common or rare)

Slightly common.

4b. Reference

5a. Are the proposed characters in current use by the user community?

Yes.

5b. If YES, where?

Scholars and some local use in Sierra Leone and Liberia.

6a. After giving due considerations to the principles in the P&P document must the proposed characters be entirely in the BMP?

No.

6b. If YES, is a rationale provided?

6c. If YES, reference

7. Should the proposed characters be kept together in a contiguous range (rather than being scattered)?

Yes.

8a. Can any of the proposed characters be considered a presentation form of an existing character or character sequence?

No.

8b. If YES, is a rationale for its inclusion provided?

8c. If YES, reference

9a. Can any of the proposed characters be encoded using a composed character sequence of either existing characters or other proposed characters?

Yes.

9b. If YES, is a rationale for its inclusion provided?

Yes.

9c. If YES, reference

Canonical decompositions are given along with the base characters and script-specific diacritics.

10a. Can any of the proposed character(s) be considered to be similar (in appearance or function) to an existing character?

No.

10b. If YES, is a rationale for its inclusion provided?

10c. If YES, reference

11a. Does the proposal include use of combining characters and/or use of composite sequences (see clauses 4.12 and 4.14 in ISO/IEC 10646-1: 2000)?

Yes.

11b. If YES, is a rationale for such use provided?

Yes.

11c. If YES, reference

See above.

11d. Is a list of composite sequences and their corresponding glyph images (graphic symbols) provided?

Yes.

11e. If YES, reference

See code chart and Unicode properties.

12a. Does the proposal contain characters with any special properties such as control function or similar semantics?

No.

12b. If YES, describe in detail (include attachment if necessary)

13a. Does the proposal contain any Ideographic compatibility character(s)?

No.

13b. If YES, is the equivalent corresponding unified ideographic character(s) identified?